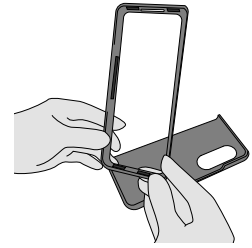


Thin Flex Series case for Galaxy Z Fold4

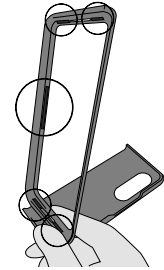
1

Remove the case from the packaging and start with the side of the case with the larger opening.



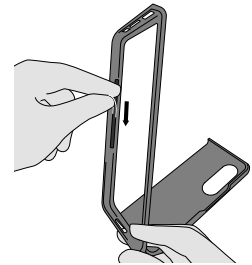
2

There are five pieces of adhesive to help the case attach firmly to your device.



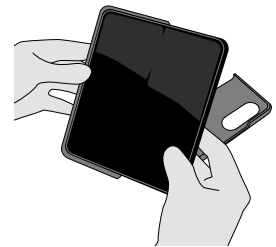
3

Grab the small tabs to pull the film off the case. A quick tip is to use a pair of tweezers to grab the tabs.



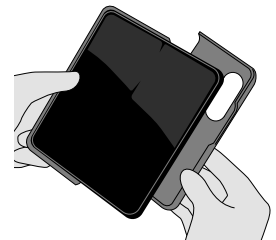
4

Align case side with larger opening to side of device with external screen.



5

Align other side of case to device camera, applying pressure until device snaps into place.



6

To ensure a secure attachment, firmly press around each side and back of case.

